

WHO'S WHO IN LOS ANGELES BUSINESS

Top executives of L.A.'s biggest companies and organizations.

AEROSPACE/ DEFENSE



TIM CONVER
Chief Executive
AeroVironment Inc.
Age: 71
Business:

Aircraft/Aerospace
Revenue: \$251.7 million
City: Monrovia



JOSEPH MAZIN
President, Chief Executive
Flammemaster Corp.
Age: 68
Business:

Chemicals
Revenue: \$5.4 million
City: Pacoima

ROBERT MEHRABIAN

President, Chief Executive, Chairman
Teledyne Technologies Inc.
Age: 73
Business: Electronics and instrumentation
Revenue: \$2.13 billion
City: Thousand Oaks
Membership in Professional Organizations: National Academy of Engineering; American Society of Metals International; Minerals, Metals and Materials Society

ANTHONY J. REARDON

Chief Executive, Chairman
Ducommun Inc.
Age: 63
Business: Aerospace
Revenue: \$737 million
City: Monrovia
Membership in Professional Organizations: Aerospace Industries Association

HAL WEINSTEIN

Interim Chief Executive
Wesco Aircraft Holdings Inc.
Age: 60
Business: Aerospace
Revenue: \$1.4 billion
City: Valencia

APPAREL

JOHN LUTTRELL

Interim Chief Executive, CFO, Principal Accounting Officer, Exec. VP
American Apparel Inc.
Age: 59
Business: Apparel
Revenue: \$634 million in 2013
City: Los Angeles

MARC B. CROSSMAN JR.

Chief Executive, President, Director
Joe's Jeans Inc.
Age: 42
Business: Apparel
Revenue: \$140 million (2013)
City: Commerce

ROBERT GREENBERG

Chief Executive, Chairman
Skechers U.S.A. Inc.
Age: 74
Business: Apparel
Revenue: \$1.8 billion
City: Manhattan Beach

LISA HARPER

Chief Executive, Chairwoman
Hot Topic Inc.
Business: Apparel
Revenue: \$742 million (2012)
City: City of Industry

DAVID CONN

Chief Executive
True Religion Apparel Inc.
Business: Apparel
Revenue: \$467 million in 2012
City: Vernon

PAUL MARCIANO

Chief Executive, Vice Chairman
Guess Inc.
Age: 62
Business: Apparel
Revenue: \$2.57 billion
City: Los Angeles

STEVEN NICHOLS

Chief Executive, President
K-Swiss Inc.
Business: Apparel
Revenue: \$223 million
City: Westlake Village

HENRY STUPP

Chief Executive
Cherokee Inc.
Age: 51
Business: Apparel
Revenue: \$28.6 million (2013)
City: Sherman Oaks
Membership in Professional Organizations: International Licensing Industry Merchandiser's Association

AUTOMOTIVE/METALS

STEVEN J. BORICK

Chairman, President, Chief Executive
Superior Industries International Inc.
Age: 61
Business: Automotive/Metals
Revenue: \$789 million
City: Van Nuys

SHANE EVANGELIST

Chief Executive, Director
US Auto Parts Network Inc.
Age: 41
Business: Automotive
Revenue: \$255 million
City: Carson

DAVID H. HANNAH

Chairman, Chief Executive
Reliance Steel & Aluminum Co.
Age: 62
Business: Automotive/Metals
Revenue: \$9.22 billion
City: Los Angeles

SELWYN JOFFE

Chairman, President and Chief Executive Officer
Motorcar Parts of America
Age: 56
Business: Automotive Aftermarket
Revenue: \$259 million
City: Los Angeles
Membership in Professional Organizations: Motor & Equipment Remanufacturers' Association, California and Nevada Automotive Wholesalers Association board member, American Institute of CPAs board member.

Membership in Civic Organizations:

Argyros School of Business and Economics-Chapman University, board member.

BUSINESS ORGANIZATIONS

► BUSINESS IMPROVEMENT DISTRICTS

BLAIR BESTEN

Executive Director
Historic Downtown LA BID
City: Los Angeles
Budget: \$1.6 million

SARA BILGER

Executive Director
Century City BID Association
City: Los Angeles
Budget: \$944,000

STEVE GIBSON

Executive Director
Figueroa Corridor Partnership
City: Los Angeles
Budget: \$1.21 million

LAURIE HUGHES

Executive Director
Gateway to L.A.
City: Los Angeles
Budget: \$1.5 million



KRAIG KOJIAN
President, Chief Executive
Downtown Long Beach Associates
City: Long Beach
Budget: \$4.1 million

ESTELA LOPEZ

Executive Director
Downtown Industrial District
City: Los Angeles
Budget: \$2.1 million

SARAH MACPHERSON

Executive Director
Sunset & Vine BID
City: Los Angeles
Budget: \$1.5 million



KERRY MORRISON
Executive Director
Hollywood Entertainment District
City: Los Angeles
Budget: \$3.51 million

STEVE MULHEIM

Chief Executive, President
Old Pasadena Management District
City: Pasadena
Budget: \$1.61 million

JIM OMAHEN

Operations Manager
Hollywood Media District
City: Los Angeles
Budget: \$1.2 million

KATHLEEN L. RAWSON

Chief Executive
Bayside District
City: Santa Monica
Budget: \$6 million

STEPHEN ROBBINS

Executive Director
San Pedro Historic Waterfront BID
City: San Pedro
Budget: \$1.1 million

ERLINDA ROMO

Executive Director
Pasadena Playhouse District Association
City: Pasadena
Budget: \$1 million

GARY RUSSELL

Executive Director
Wilshire Center
City: Los Angeles
Budget: \$742,000

CAROL E. SCHATZ

Executive Director
Downtown Center BID
City: Los Angeles
Budget: \$5.86 million

KENT C. SMITH

Executive Director
LA Fashion District
City: Los Angeles
Budget: \$4.2 million

TODD STEADMAN

Executive Director
Sunset Strip BID
City: West Hollywood
Budget: \$882,000

ANDREW THOMAS

Executive Director
Westwood Village BID
City: Los Angeles
Budget: \$1.32 million

GEORGE YU

Executive Director
Chinatown BID
City: Los Angeles
Budget: \$1.4 million

► CHAMBERS OF COMMERCE

SUSAN BURSK

Chief Executive, President
Century City Chamber of Commerce
City: Los Angeles
Budget: \$450,000

TERRI CRAIN

Chief Executive, President
Santa Clarita Valley Chamber of Commerce
City: Santa Clarita
Budget: \$900,000

CHRISTINA DAVIS

Chief Executive, President
LAX Coastal Area Chamber of Commerce
City: Los Angeles
Budget: \$528,000

DONNA DUPERRON

Chief Executive, President
Torrance Area Chamber of Commerce
City: Torrance
Budget: \$690,000

KATHIE FINK

Chief Executive

Santa Fe Springs Chamber of Commerce & Industrial League Inc.
City: Santa Fe Springs
Budget: \$410,000

SHARON GIBBS

Executive Director
Alhambra Chamber of Commerce
City: Alhambra
Budget: \$978,000

RANDY GORDON

Chief Executive, President
Long Beach Area Chamber of Commerce
City: Long Beach
Budget: \$1.5 million

WAYNE GRIFFIN

Chief Executive, President
Catalina Island Chamber of Commerce & Visitors Bureau
City: Avalon
Budget: \$1.4 million

LERON GUBLER

Executive Director
Hollywood Chamber of Commerce
City: Los Angeles
Budget: \$2.1 million

GENE HALE

Chairman
Greater Los Angeles African American Chamber of Commerce
City: Los Angeles
Budget: \$443,000

EILEEN HUPP

Chief Executive, President
Palos Verdes Peninsula Chamber of Commerce
City: Rolling Hills Estates
Budget: \$525,000

JUDEE KENDALL

Chief Executive, President
Glendale Chamber of Commerce
City: Glendale
Budget: \$515,000

JILL LEDERER

Chief Executive, President
Greater Conejo Valley Chamber of Commerce
City: Westlake Village
Budget: \$1.5 million

PAUL LITTLE

Chief Executive, President
Pasadena Chamber of Commerce
City: Pasadena
Budget: \$625,000

LETICIA MARTINEZ

Executive Director, Chief Executive
Greater Huntington Park Area Chamber of Commerce
City: Huntington Park
Budget: \$650,000

LETIZIA MICCOLI

Executive Director
Italy-America Chamber of Commerce West Inc.
City: Los Angeles
Budget: \$500,000

GENEVIEVE MORRILL

Chief Executive, President



Who's Who in Los Angeles Business *continued*

West Hollywood Chamber of Commerce

City: West Hollywood
Budget: \$551,000

JAMES O'CALLAGHAN

*Chief Executive
Manhattan Beach Chamber of Commerce*
City: Manhattan Beach
Budget: \$505,000

GARY OLSON

*Chief Executive, President
Burbank Chamber of Commerce*
City: Burbank
Budget: \$566,000

STEVEN ROSE

*Chief Executive
Culver City Chamber of Commerce*
City: Culver City
Budget: \$425,000

LAUREL ROSEN

*Chief Executive, President
Santa Monica Chamber of Commerce*
City: Santa Monica
Budget: \$900,000

DONALD SACHS

*Executive Director
Industry Manufacturers Council*
City: City of Industry
Budget: \$1.45 million

MARNA SMELTZER

*Chief Executive, President
Redondo Beach Chamber of Commerce & Visitors Bureau*
City: Redondo Beach
Budget: \$1.55 million

ALEXANDER STETTINSKI

*Executive Director
Beverly Hills Chamber of Commerce*
City: Beverly Hills
Budget: \$1.6 million

ELISE SWANSON

*Chief Executive, President
San Pedro Chamber of Commerce*
City: San Pedro
Budget: \$550,000

GARY TOEBBEN

*Chief Executive, President
Los Angeles Area Chamber of Commerce*
City: Los Angeles
Budget: \$13.4 million

STUART WALDMAN

*President
Valley Industry and Commerce Association*
City: Los Angeles
Budget: \$1.1 million

BUSINESS SERVICES

▶ ACCOUNTING FIRMS

JOEL B. ANIK

*West Region Managing Partner
Grant Thornton LLP*
Age: 63
Business: Accounting, tax, advisory service
Revenue: \$1.27 billion
City: Los Angeles

Professional Organizations: American Institute of Certified Public Accountants; Massachusetts Society of Certified Public Accountants; California Society of Certified Public Accountants

Civic Organizations: Red Cross; Make a Wish Foundation; Town Hall Los Angeles; California Chamber of Commerce

KURT L. BRUNE

*Office Managing Director
WTAS*
Business: Accounting, estate planning, tax
Revenue: \$128 million
City: Los Angeles
Professional: Tax Institute, University of Southern California; California Society of Certified Public Accountants; American Institute of Certified Public Accountants; American Bar Association

Ray Calvey

*Office Managing Partner
Crowe Horwath LLP*
Business: Public accounting and consulting firm
Revenue: \$670 million (U.S. revenue)
City: Los Angeles
Age: 49
Professional Organizations: California CPA Society, Associate Member of Western Independent Banks and California Bankers Association

BRIAN CULLINAN

*Regional Managing Partner
PricewaterhouseCoopers LLP*
Business: Accounting, regulation, tax
Revenue: \$32.1 billion
City: Los Angeles

TODD GELFAND

*Managing Partner
Gelfand Rennert & Feldman LLP*
Business: Accounting, royalty compliance, tax
Revenue: \$35 million
City: Los Angeles

PHILIP J. HOLTHOUSE

*Managing Partner
Holthouse Carlin & Van Trigt LLP*
Business: Accounting, audit, tax
Revenue: \$74 million
City: Los Angeles
Professional Organizations: American Institute of Certified Public Accountants; California Society of Certified Public Accountants; Graduate Taxation Program
Civic Organizations: Curtis School; Harvard/Westlake School; Young Presidents' Organization

MARK HUTCHINS

*Los Angeles Office Managing Partner
KPMG LLP*
Business: Professional services (audit, tax, and advisory services)
City: Los Angeles
Age: 52
Professional Organizations: California Chamber of Commerce, British American Business Council (Los Angeles chapter), KPMG's U.S. board of directors, California State Steering Committee of The Accountants Coalition
Membership in Civic Organizations: The United Way of Greater Los

Angeles, United Way's Tocqueville Society, The Library Foundation of Los Angeles, St. James' Episcopal School, Marlborough Girls School

LEON JANKS

*Managing Partner
Green Hasson Janks*
Business: Accounting, audit, litigation support
Revenue: \$22 million
City: Los Angeles
Professional Organization: California Society of Certified Public Accountants; American Institute of Certified Public Accountants
Civic Organizations: Jewish Federation; Milken Community High School

DOUGLAS WAITE

*Managing Partner
Miller Kaplan Arase LLP*
Business: Accounting
Revenue: \$36.6 million
City: North Hollywood
Age: 57
Professional Organizations: American Institute of Certified Public Accountants, California Society of Certified Public Accountants, Southern California Association of Benefit Plan Administrators - Board of Directors, International Foundation of Employee Benefit Plans
Civic Organizations: Tri-Valley YMCA, YMCA of Los Angeles - East Valley, Golf Committee, Heartbeat of Hollywood Golf Tournament - Committee Member, San Fernando Mission Indian Tribe

JIM PITRAT

*Managing Partner
SingerLewak LLP*
Business: Accountants & Consultants
Revenue: \$38.5 million
City: Los Angeles
Age: 46
Professional Organizations: California Society of Certified Public Accountants, American Institute of Certified Public Accountants
Civic Organizations: LA Venture Association, Software Council of Southern California, Association for Capital Growth

JOE MAZZA

*Office Managing Partner
McGladrey LLP*
Business: accounting, tax and business consulting
Revenue: \$1.47 billion (national)
City: Los Angeles
Membership in Professional Organizations: California Society of Certified Public Accountants, New York State Society of Certified Public Accountants, American Institute of Certified Public Accountants
Membership in Civic Organizations: University of Southern California Leventhal School of Accounting's Board of Advisors

KENNETH A. MILES

*Managing Partner
NSBN LLP*
Business: Accounting, audit, litigation support
Revenue: \$15 million
City: Beverly Hills

Professional Organizations: California Society of Certified Public Accountants; American Institute of Certified Public Accountants
Civic Organizations: Jewish Federation of Southern California; Temple Ahavat Shalom; New Horizons

DAVID H. ROBERTS

*Managing Partner
RBZ LLP*
Business: Accounting, audit, personal finance
Revenue: \$24.7 million
City: Los Angeles
Professional Organizations: American Bar Association; State Bar of California, Law Practice Management section; California Society of Certified Public Accountants; American Institute of Certified Public Accountants

SCOTT M. SACHS

*Managing Partner
CohnReznick*
Age: 48
Business: Accounting, tax, advisory service
Revenue: \$508 million
City: Los Angeles
Professional Organizations: Ernst & Young LLP Alumni Association of Southern California; California Society of Certified Public Accountants; American Institute of Certified Public Accountants
Civic Organizations: Boys & Girls Club of West Valley; Eisenberg Village, Los Angeles Jewish Home; Entrepreneurship Institute; C5 Youth Foundation

MICHAEL M. SAVOY

*Managing Director
Gumbiner Savett Inc.*
Business: Accounting, audit, tax
Revenue: \$20 million
City: Santa Monica
Professional Organizations: BKR International, Americas Region Board, American Institute of Certified Public Accountants, California Society of Certified Public Accountants, Employee Stock Ownership Plan Association
Civic Organizations: California Board of Accountancy, Los Angeles Chamber of Commerce

MICKEY SEGAL

*Managing Partner
Nigro Karlin Segal & Feldstein LLP*
Business: Accounting, estate planning, tax
Revenue: \$50.2 million
City: Los Angeles
Civic Organizations: American Cancer Society's Southern California Invitational Golf Tournament; Heartbeat of Hollywood Golf Tournament; Unified Educational Trust, California State Polytechnic University at Pomona; Planned Giving

TODD VAN DER WEL

*Managing Partner
Moss Adams LLP*
Business: Accounting, audit, tax
Revenue: \$344 million
City: Los Angeles
Professional Organizations: American Institute of Certified Public Accountants, California Society of Certified Public Accountants

STEPHAN H. WASSERMAN

*Managing Partner
Gursey Schneider LLP*
Business: Accounting, estate planning, tax
Revenue: \$26 million
City: Los Angeles
Professional Organizations: California Society of Certified Public Accountants; American Institute of Certified Public Accountants

COMPUTERS/ PERIPHERALS/ ELECTRONICS

ERROL GINSBERG

*President, Chief Executive
Ixia*
Age: 58
Business: Computers/electronics, converged Internet Protocol test systems
Revenue: \$467.3 million
City: Calabasas

STEVEN N. BRONSON

*Chief Executive
Qualstar Corp.*
Age: 48
Business: Computers/electronics, automated magnetic tape libraries
Revenue: \$10.9 million (net)
City: Simi Valley

CHRISTOPHER R. GARDNER

*President, Chief Executive
Vitesse Semiconductor Corp.*
Age: 54
Business: Computers/electronics, integrated circuits
Revenue: \$108.5 million (net)
City: Camarillo

MELVIN GAGERMAN

*Chairman, President, Chief Executive,
Chief Financial Officer
Aura Systems Inc.*
Age: 71
Business: Computers/electronics
Revenue: \$2.3 million (net)
City: El Segundo

DAVID S. STEHLIN

*President, Chief Executive, Chief
Operating Officer
MRV Communications Inc.*
Age: 57
Business: Computers/electronics, optical communications network infrastructure equipment
Revenue: \$166 million
City: Chatsworth

OLEG KHAYKIN

*Chief Executive, Director
International Rectifier Corp.*
Age: 49
Business: Computers/electronics
Revenue: \$1.11 billion (net)
City: El Segundo

MOHAN R. MAHESWARAN

*President, Chief Executive, Director
Semtech Corp.*
Age: 50
Business: Computers/electronics, analog and mixed-signal semiconductor products
Revenue: \$595 million (net)
City: Camarillo



**AUTOMOTIVE/
METALS**

SELWYN JOFFE
Chairman, President and
Chief Executive Officer
Motorcar Parts of America



**ACCOUNTING
FIRMS**

JOEL B. ANIK
West Region
Managing Partner
Grant Thornton LLP



BANKS

RUSSELL GOLDSMITH
Chairman,
Chief Executive
City National Bank

**CONSTRUCTION/
ENGINEERING**

DAN L. BATRACK
Chairman, President, Chief Executive
Tetra Tech Inc.
Age: 56
Business: Construction/engineering,
construction management, natural
resource management
Revenue: \$1.86 billion
City: Pasadena

MICHAEL BURKE
Chief Executive
Aecom Technology Corp.
Age: 51
Business: Construction/engineering,
planning, architectural and engineering
design
Revenue: \$8.36 billion
City: Los Angeles

CRAIG L. MARTIN
Chief Executive
Jacobs Engineering Group Inc.
Business: Construction/engineering,
project services
Revenue: \$ 12.7 billion
City: Pasadena

RONALD N. TUTOR
Chairman, Chief Executive
Tutor Perini Corp.
Age: 74
Business: Construction/engineering,
design-build services
Revenue: \$ 4.39 billion
City: Sylmar
Civic Organizations: Trustee,
University of Southern California

ENERGY/UTILITIES

TODD A. STEVENS
President, Chief Executive
California Resources Corp.
Business: Energy/utilities, oil, natural
gas liquids
Revenue: \$4.2 million
City: Los Angeles

THEODORE F. CRAVER JR.
Chairman, President, Chief Executive
Edison International
Age: 63
Business: Energy/utilities, power gen-
eration
Revenue: \$12.6 billion
City: Rosemead
Professional Organizations: Edison
Electric Institute; Nuclear Power
Operations; Electric Power Research
Institute; Electric Drive Transportation
Association

Civic Organizations: Atry
National Center

T. RIGGS ECKELBERRY
Chairman, President, Chief Executive
OriginOil Inc.
Age: 62
Business: Energy/utilities, research
and development
Revenue: \$141,000
City: Los Angeles
Professional Organizations: National
Algae Association

DARREN R. JAMISON
President, Chief Executive
Capstone Turbine Corp.
Age: 47
Business: Energy/utilities, microtur-
bine technology solutions
Revenue: \$133 million
City: Chatsworth

WOLF E. REGENER
Chief Executive, President
BNK Petroleum Inc.
Business: Energy/utilities, crude oil,
natural gas, natural gas liquids
Revenue: \$12.8 million
City: Camarillo
Professional Organizations: California
Independent Petroleum Association

ROBERT J. SPROWLS
Chief Executive, President
American States Water Co.
Age: 56
Business: Energy/utilities, contracted
services
Revenue: \$472 million
City: San Dimas

HALBERT S. WASHBURN
Chief Executive
BreitBurn Energy Partners LP
Age: 54
Business: Energy/utilities, producing
and non-producing crude oil, natural
gas reserves
Revenue: \$664 million
City: Los Angeles
Professional: California Independent
Petroleum Association

FINANCIAL SERVICES

► **BANKS**

HAEYOUNG CHO
Chief Executive, President
Pacific City Bank
Business: Bank
Assets: \$806 million
City: Los Angeles

DUNSON K. CHENG
Chairman, Chief Executive, President
Cathay Bank
Age: 69
Business: Bank
Assets: \$11.5 billion
City: Los Angeles
Professional Organizations: Cathay
Real Estate Investment Trust
Civic Organizations: Southern
California Public Radio

RUSSELL GOLDSMITH
Chairman, Chief Executive
City National Bank
Age: 64
Business: Bank
Assets: \$30.5 billion
City: Los Angeles
Professional Organizations: Mid-Size
Bank Coalition of America; Wynn
Resorts Ltd.
Civic Organizations: Los Angeles
Coalition for the Economy and Jobs;
Harvard-Westlake School; Council on
Foreign Relations



DON M. GRIFFITH
Chairman, Chief
Executive
Grandpoint Bank
Business: Bank
Assets: \$2.46 billion
City: Los Angeles

LEON BLANKSTEIN
Chief Executive, President
American Business Bank
Business: Bank
Assets: \$1.46 billion
City: Los Angeles
Professional Organizations: California
Bankers Association
Civic: Toastmasters; Jonathan Club

KEVIN S. KIM
Chief Executive, President, Chairman
BBCN
Age: 57
Business: Bank, commercial loans
Assets: \$6.86 billion
City: Los Angeles
Professional Organizations: Los
Angeles Area Chamber of Commerce

C.G. KUM
Chief Executive, President
Hanmi Bank
Age: 59
Business: Bank, financial services
Assets: \$3.1 billion
City: Los Angeles

REBECCA MACIEIRA-KAUFMANN
Chief Executive, President
Banamex USA
Business: Bank

Assets: \$1.13 billion
City: Century City

NOOR MENAI
Chief Executive, President
CTBC Bank
Business: Bank, commercial and
industrial banking services
Assets: \$2.23 billion
City: Los Angeles

DAVID MISCH
Chief Executive
Community Bank
Business: Bank, SBA loans, treasury
management services
Assets: \$3.5 billion
City: Pasadena

STEVEN MNUCHIN
Chairman
OneWest Bank NA
Business: Bank
City: Pasadena
Assets: \$22.5 billion

DOMINIC NG
Chairman, Chief Executive
East West Bank
Business: Bank
Assets: \$27.4 billion
City: Pasadena

V.S. THIRUMALAIAPPAN
Chief Executive, President
State Bank of India (California)
Business: Bank
Assets: \$670 million
City: Los Angeles

DAVID RAINER
Chief Executive, President
California United Bank
Business: Bank
Assets: \$1.43 billion
City: Encino

ITSUGU SERIZAWA
Chairman, Chief Executive
Manufacturers Bank
Business: Bank, SBA loans
Assets: \$2.34 billion
City: Los Angeles

ALAN THIAN
Chief Executive, President
Royal Business Bank
Business: Bank
Assets: \$807 million
City: Los Angeles

MATTHEW P. WAGNER
Chairman, Chief Executive
Pacific Western Bank
Age: 57
Business: Bank

Assets: \$15.38 billion
City: Los Angeles

DANIEL WALKER/HENRY WALKER
Chairman, Chief Executive/President
Farmers and Merchants Bank of Long
Beach
Business: Bank
Assets: \$5.4 billion
City: Long Beach

ALTON WANG
President
Far East National Bank
Business: Bank
Assets: \$1.43 billion
City: Los Angeles

JAE WHAN YOO
Chief Executive, President
Wilshire Bank
Age: 65
Business: Bank, SBA loans
Assets: \$3.67 billion
City: Los Angeles

LI YU
Chairman, Chief Executive
Preferred Bank
Business: Bank
Assets: \$1.9 billion
City: Los Angeles

► **CREDIT UNIONS**

RICHARD T. ANDREWS
Chief Executive, President
F & A Federal Credit Union
Business: Credit union
Assets: \$1.3 billion
City: Monterey Park

JOHN A. BOMMARITO
Chief Executive, President
Western Federal Credit Union
Business: Credit union
Assets: \$1.97 billion
City: Manhattan Beach

CHARLES BRUEN
Chief Executive, President
First Entertainment Credit Union
Business: Credit union
Assets: \$1.1 billion
City: Hollywood
Professional Organizations: California
Credit Union League; Nevada Credit
Union League



TERESA FREEBORN
Chief Executive,
President
Xceed Financial Credit
Union
Business: Credit union
Assets: \$898 million
City: El Segundo


Who's Who in Los Angeles Business *continued*


RICHARD L. HARRIS
Chief Executive,
President
Caltech Employees
Federal Credit Union

Business: Credit union
Assets: \$1.3 billion
City: La Canada Flintridge
Professional Organizations: National Association of Federal Credit Unions
Civic Organizations: Verdugo Hills Hospital Foundation Board



MARK HERTER
Chief Executive,
President
Farmers Insurance Group
Federal Credit Union

Business: Credit union, debt consolidation loans, home equity loans
Assets: \$644 million
City: Los Angeles

JOHN JANCLAES
Chief Executive, President
Partners Federal Credit Union
Business: Credit union
Assets: \$1.24 billion
City: Burbank

MIKE MASTRO
Chief Executive, President
Firefighters First Credit Union
Business: Credit union
Assets: \$917 million
City: Los Angeles

RONALD McDANIEL
Chief Executive, President
California Credit Union
Business: Credit union
Assets: \$1.22 billion
City: Glendale
Professional Organizations: National Association of State Credit Union Supervisors



JOHN M. MERLO
Chief Executive,
President
Premier America Credit
Union

Business: Credit union
Assets: \$1.57 billion
City: Chatsworth
Professional Organizations: California Credit Union League; Nevada Credit Union League

NADER MOGHADDAM
Chief Executive, President
Financial Partners Credit Union
Business: Credit union
Assets: \$883 million
City: Downey

CARLTON MUSSMAN
Chief Executive, President
First Financial Credit Union
Business: Credit union
Assets: \$433 million
City: West Covina

TERRY O'STEEN
Chief Executive, President
First City Credit Union
Business: Credit union
Assets: \$525 million
City: Los Angeles

G. MICHAEL PADGETT
Chief Executive, President

*Los Angeles Police Federal
Credit Union*
Business: Credit union
Assets: \$794 million
City: Van Nuys

CARL STEWART
Chief Executive, President
Water and Power Community Credit
Union
Business: Credit union
Assets: \$518 million
City: Los Angeles
Professional Organizations: National Credit Union Foundation; National Federation of Community Development Credit Unions
Civic: Richard Myles Johnson Foundation

STEVE BRANDON
Chief Executive, President
Honda Federal Credit Union
Business: Credit union
Assets: \$655 million
City: Torrance

JOHN WALLING
Chief Executive, President
Christian Community Credit Union
Business: Credit union
Assets: \$572 million
City: San Dimas

DARREN WILLIAMS
Chief Executive, President
Wescom Credit Union
Business: Credit union
Assets: \$2.76 billion
City: Pasadena

► **MONEY MANAGEMENT FIRMS**

EMILY ALEJOS
Chief Investment Officer
Tradewinds Global Investors LLC
Business: Money management firm
L.A. County Assets Managed: \$6.1 billion
City: Los Angeles

DENNIS BEIN
Chief Investment Officer
Analytic Investors
Business: Money management firm
L.A. County Assets Managed: \$8.9 billion
City: Los Angeles
Professional Organizations: Institute of Chartered Financial Analysts; Los Angeles Society of Financial Analysts

JON D. BOSSE
Chief Investment Officer
NWQ Investment Management Co.
LLC
Business: Money management firm
L.A. County Assets Managed: \$15.1 billion
City: Los Angeles
Professional Organizations: Association for Investment Management and Research; Los Angeles Society of Financial Analysts

MICHAEL J. CASEY
Chief Executive
Whittier Trust Co.
Age: 67
Business: Investment and wealth management
L.A. County Assets Managed: \$7.1 billion

City: South Pasadena
Professional Organizations: Confidence Foundation, Mericos Foundation
Civic Organizations: Society of the Friendly Sons of St. Patrick, Annandale Country Club, California Club, Rolls-Royce Collector's Club

GEORGE DAVIS
Chief Executive
Hotchkis and Wiley Capital
Management
Business: Money management firm, equity value funds
L.A. county assets managed: \$26 billion
City: Los Angeles

DAVID LIPPMAN
Chief Executive, President
TCW Group
Age: 54
Business: Asset management
L.A. County Assets Managed: \$132 billion
City: Los Angeles

HOWARD MARKS
Chairman
Oaktree Capital Management
Age: 66
Business: Money management firm, alternative markets
L.A. County Assets Managed: \$66.3 billion
City: Los Angeles

HENRY CHYUNG
Chief Investment Officer
Post Advisory Group
Business: Money management firm
L.A. County Assets Managed: \$11.3 billion
City: Santa Monica

HAL W. REYNOLDS
Chief Investment Officer
Los Angeles Capital Management and
Equity Research
Business: Money management firm
L.A. County Assets Managed: \$15.9 billion
City: Los Angeles

STEVE WALSH
Chief Investment Officer
Western Asset Management Co.
Business: Money management firm
L.A. County Assets Managed: \$180 billion
City: Pasadena

► **PRIVATE EQUITY FIRMS**

ROBERT BERGMANN
Senior Partner
Centre Partners Management LLC
Business: Consumer, retail, energy
Assets: \$1 billion
City: Los Angeles



JOHN G. DANHAKL
Managing Partner
Leonard Green &
Partners LP
Business: Gaming, entertainment, media
Assets: \$14.9 billion
City: Los Angeles



MICHAEL J. FOURTICQ SR.
Managing Partner
Hancock Park
Associates

Business: Manufacturing, services
Assets: \$379 million
City: Los Angeles
Professional Organizations: Synchronous Aerospace Group

BRADFORD M. FREEMAN
Founding Partner
Freeman Spogli & Co.
Business: Retail, direct marketing
Assets: \$1.36 billion
City: Los Angeles

MARSHALL GELLER
Managing Director
St. Cloud Capital LLC
Age: 74
Business: General
Assets: \$200 million
City: Los Angeles
Professional Organizations: Little Hoover Commission
Civic Organizations: Cedars-Sinai Medical Center; Dean's Advisory Council, College of Business & Economics, California State University, Los Angeles



MICHAEL HOOKS
Managing Director
Black Canyon Capital
Business: Business services, consumer, health care, restaurants
Assets: \$500 million
City: Los Angeles



LAUREN B. LEICHTMAN
Founding Principal,
Chief Executive
Levine Leichtman
Capital Partners

Business: Consumer products, services
Assets: \$6.6 billion
City: Beverly Hills
Civic Organizations: Dean's Circle, Southwestern University; Board of Directors, Wilshire Boulevard Temple

J. CHRISTOPHER LEWIS
General Partner, Managing Director
Riordan Lewis & Haden
Age: 56
Business: Business services, health care
Assets: \$600 million
City: Los Angeles
Civic Organizations: Entrepreneur Program, Marshall School of Business, University of Southern California



JEFFREY D. LOVELL
Chairman, Managing
Director
Lovell Minnick Partners
LLC

Business: Financial services, business services
Assets: \$850 million
City: El Segundo
Civic Organizations: Investment Policy Committee, University of Colorado Foundation; Leeds School



JAMES AC McDERMOTT
Managing Partner
US Renewables Group
Business: Renewable

energy investments
Assets: \$750 million
City: Santa Monica
Professional Organizations: American Council on Renewable Energy
Civic Organizations: Network for Teaching Entrepreneurship

DAVID M. MCGOVERN
Founder
Marlin Equity Partners
Business: Technology, consumer, non-core divisions of Fortune 1000 companies
Assets: \$3 billion
City: El Segundo

LUIS NOGALES
Managing Partner
Nogales Investors
Business: Aerospace, retail, business services
Assets: \$256 million
City: Los Angeles
Civic Organizations: Ford Foundation; Stanford University; Mayo Clinic Trust



MARTIN SARAF
Managing Partner
Century Park Capital
Partners
Business: Medical supplies and components, business services, industrials

Assets: \$265 million
City: El Segundo
Civic Organizations: Board of Trustees, Vistamar School

PETER SEIDLER
Founding Partner
Seidler Equity Partners
Business: General
Assets: \$1.9 billion
City: Marina del Rey

► **SAVINGS & LOAN ASSOCIATIONS**

RANDY BOWERS
Chief Executive, President
Malaga Bank FSB
Business: Savings & Loan
Assets: \$925 million
City: Palos Verdes Estates

FRANK CHANG
Chief Executive
Universal Bank
Business: Savings & Loan
Assets: \$316 million
City: West Covina

WAYNE-KENT BRADSHAW
Chief Executive, President
Broadway Federal Bank FSB
Business: Savings & Loan
Assets: \$335 million
City: Los Angeles

► **SECURITIES BROKERS**

DONALD BIZUB
Chief Executive
Western International Securities
Business: Securities broker, fee-based asset management
L.A. County Employment: 130



PRIVATE EQUITY FIRMS

MARSHALL GELLER
Managing Director
St. Cloud Capital LLC



SECURITIES BROKERS

JASON REESE
Chief Executive
Imperial Capital LLC



VENTURE CAPITAL FIRMS

DAVID CREMIN
Managing Director
DFJ Frontier

City: Pasadena
Professional Organizations: Securities Industry and Financial Markets Association; Securities Industry Management Association of Southern California; National Association of Independent Broker/Dealers

RANDALL K. GROSSBLATT
Southern California Market Manager
UBS Financial Services Inc.
Business: Securities broker, wealth management
L.A. County Employment: 375
City: Los Angeles

ROBERT PERRY
Managing Director, Regional Director
Morgan Stanley Smith Barney
Business: Securities broker, credit and lending
L.A. County Employment: 655
City: Los Angeles

JOHN B. PETRICK
Senior Managing Director
Perennial Financial Services
Business: Financial services
L.A. County Employment: 13
City: Los Angeles

JASON REESE
Chief Executive
Imperial Capital LLC
Business: Securities broker, mergers and acquisitions
L.A. County Employment: 79
City: Los Angeles
Civic Organizations: Capital Campaign, Yale University



CHANDLER ROOT
Regional Managing Director
Merrill Lynch
Business: Securities broker, investment advisory
L.A. County Employment: 548
City: Los Angeles
Professional Organizations: Market President Executive Council of LA
Civic Organizations: Greater Los Angeles United Way; USC Development Advisory Council, Office of Black Alumni; Union Rescue Mission; Manhattan Beach Education Foundation; Principal for a Day; South Central Scholars; National Foundation for Teaching Entrepreneurship

RANDY RUSSELL
President
Zahorik Financial Services Inc.
Business: Securities broker, retirement plans
L.A. County Employment: 16
City: Pasadena



RICHARD SMITH
Managing Principal,
Westlake Village
Sagemark Consulting
Lincoln Financial
Advisors
Business: Securities broker, investment management
L.A. County Employment: 100
City: Westlake Village
Professional Organizations: Pacific Southwest Regional Planning Group; Financial Planning Association for Ventura County; Association for General Contractors; Western Growers Association
Civic Organizations: Planned Giving Council, Ventura County Community Foundation; UCLA Alumni Foundation

► **VENTURE CAPITAL FIRMS**

DAVID CREMIN
Managing Director
DFJ Frontier
Age: 54
Business: Media and technology
Capital: \$80 million
City: Beverly Hills

BILL ELKUS
Managing Director, Founder
Clearstone Venture Partners
Business: Technology
Capital: \$600 million
City: Santa Monica
Civic: Business Law Association, USC



JAY FERGUSON
Managing Partner
Vicente Capital Partners
Business: Business services, software, health care services
Capital: \$165 million
City: Los Angeles
Civic Organizations: Board of Visitors at Anderson School of Management, UCLA; Toigo Foundation

DAVID SIEMER
Managing Partner
Wavemaker Partners
Business: E-commerce, mobile, curated Web
Capital: \$45 million
City: Santa Monica



ALEX SUH
Managing Director
California Technology Ventures LLC
Business: IT, life science
Capital: \$250 million
City: Pasadena
Civic: Villa Esperanza; Kiwanis;

Women at Work; Crippled Children's Society; Special Olympics; Keck Graduate Institute at Claremont Colleges

MARK SUSTER
Partner
Upfront Ventures
Business: Retail innovation, consumer, SaaS/cloud, digital media
Capital: \$400 million
City: Santa Monica



TOM UNTERMAN
Founding Partner
Rustic Canyon Partners
Business: Internet, software, services
Capital: \$350 million
City: Santa Monica
Civic: California Community Foundation; CalArts; Heal the Bay; MOCA, Westwood Technology Transfer; California State Teacher's Retirement System

WILLIAM WOODWARD
Managing Partner
Anthem Venture Partners
Business: Internet, media, software, semiconductors
Capital: \$250 million
City: Santa Monica

FOUNDATIONS/TRUSTS

WILLIAM H. AHMANSON
President
Ahmanson Foundation
Assets: \$1.11 billion
City: Beverly Hills

WALLIS ANNENBERG
Chairwoman, Chief Executive,
President
Annenberg Foundation
Assets: \$1.69 billion
City: Los Angeles
Civic Organizations: Museum of Modern Art, New York; USC Shoah Foundation Institute for Visual History and Education's Board of Councilors; California Science Center; Performing Arts Center of Los Angeles County; Los Angeles Philharmonic Orchestra; Los Angeles County Museum of Art; Natural History Museum of Los Angeles County; Museum of Contemporary Art, Los Angeles

JUDY BELK
Chief Executive, President
California Wellness Foundation
Assets: \$940 million
City: Woodland Hills
Civic Organizations: Surdna Foundation, Marlborough School

ELI BROAD
Founder
Broad Foundations
Assets: \$2.77 billion
City: Los Angeles

ROBERT A. DAY
Chairman, Chief Executive, President
W.M. Keck Foundation
Assets: \$1.26 billion
City: Los Angeles

RICHARD GRANT
President
Dan Murphy Foundation
Assets: \$223 million
City: Los Angeles

RUTH ELIEL
Executive Director
Colburn Foundations
Assets: \$257 million
City: Los Angeles
Civic Organizations: USC Thornton School of Music; Los Angeles Chamber Orchestra

WENDY GAREN
Chief Executive, President
Ralph M. Parsons Foundation
Assets: \$409 million
City: Los Angeles
Civic: Philanthropy Leadership Group; The Trusteeship; California Advisory Board of the Milken Institute

LISA D. HANSEN
Chairman
Kenneth T. & Eileen L. Norris Foundation
Assets: \$181 million
City: Long Beach

ANTONIA HERNANDEZ
Chief Executive, President
California Community Foundation
Assets: \$1.42 billion
City: Los Angeles
Civic: Commission on Presidential Debate; JFK Library Foundation Profile in Courage Award Committee; American Automobile Association; Automobile Club of Southern California; Council on Foundations; Center on Budget and Policy Priorities; Grameen America; Blue Shield of California Foundation; Los Angeles 2020 Commission; UCLA Board of Advisors

STEVEN M. HILTON
Chairman, President, Chief Executive
Conrad N. Hilton Foundation
Assets: \$2.43 billion
City: Agoura Hills

DEBORAH MARROW
Director
J. Paul Getty Trust (Getty Foundation)
Assets: \$9.34 billion
City: Los Angeles

LOWELL MILKEN
Chairman
Milken Family Foundation
Assets: \$378 million
City: Santa Monica
Professional: Knowledge Universe Education Holdings, Inc.

KATHLEEN L. MCCARTHY
Chairwoman
Thomas and Dorothy Leavey Foundation
Assets: \$249 million
City: Los Angeles

VICTORIA ROGERS
President
Rose Hills Foundation
Assets: \$448 million
City: Pasadena

MARY ODELL
President
UniHealth Foundation
Assets: \$290 million
City: Los Angeles

ROBERT K. ROSS M.D.
Chief Executive, President
California Endowment
Assets: \$3.49 billion
City: Los Angeles

MARVIN I. SCHOTLAND
Chief Executive, President
Jewish Community Foundation of Los Angeles
Assets: \$906 million
City: Los Angeles
Civic Organizations: University of Southern California's Center on Philanthropy and Public Policy

ROBERT A. SMITH III
Chairman
Carrie Estelle Doheny Foundation
Assets: \$172 million
City: Los Angeles

MONICA C. LOZANO
Chairwoman
Weingart Foundation
Assets: \$799 million
City: Los Angeles
Professional: Board of US Hispanic Media, Inc.
Civic Organizations: University of Southern California; Rockefeller Foundation



Who's Who in Los Angeles Business *continued*

WALTER W. TIMOSHUK

President
Norton Simon Foundations
Assets: \$2.85 billion
City: Pasadena

HEALTH CARE

► BIOMEDICAL/ PHARMACEUTICAL

MARY JO ABLER

President
3M Unitek Orthodontic
Business: orthodontic products
Revenue: \$30.9 billion
City: Monrovia

CONNIE BARRY

Chief Executive, Chairwoman
Pharmavite
Business: manufacturer of nutritional products
Revenue: N/A
City: Northridge

ROBERT A. BRADWAY

Chairman, Chief Executive
Amgen Inc.
Age: 51
Business: Human therapeutics
Revenue: \$18.7 billion
City: Thousand Oaks

JIM COLLERAN

President
Neutrogena Corp.
Business: skin, hair and cosmetics products
Revenue: N/A
City: Los Angeles

JOAQUIN DELGADO

Vice President
3M Pharmaceuticals Northridge
Business: pharmaceuticals
Revenue: \$30.9 billion
City: Northridge

ERIC S. FAIN

Group President
St. Jude Medical Inc.
Age: 53
Business: medical device technology
Revenue: N/A
City: Sylmar

HOOMAN HAKAMI

Executive Vice President, Group President
Medtronic Inc.
Age: 44
Business: diabetes medical technology
Revenue: \$17 billion
City: Northridge

MAULIK NANAVATY

President
Boston Scientific Neuromodulation Corp.
Business: medical devices
Revenue: \$7.14 billion
City: Valencia

RAINER PLATZ

President
Advanced Bionics
Business: cochlear implants
Revenue: N/A
City: Valencia

CHARLIE WILHELM

President
Karl Storz Endoscopy-America Inc.
Business: distributor of endoscopes, instruments, imaging systems
Revenue: N/A
City: El Segundo

CHESTER ZELAYA

Los Angeles Plant Manager
Baxter Healthcare
Business: diversified healthcare
Revenue: \$15.3 billion
City: Los Angeles

WILLIE ZUNIGA

Chief Executive, President
Grifols Biologicals Inc.
Business: plasma derivatives
Revenue: N/A
City: Los Angeles

► HEALTH INSURERS

BENJAMIN K. CHU

Group President
Kaiser Foundation Health Plan Inc.
Business: Health insurer
Revenue: \$53.5 billion
City: Pasadena, CA
Membership in Professional Organizations: Commonwealth Fund in New York; advisory committee to the director, Centers for Disease Control and Prevention

BRANDON CUEVAS

Chief Executive, UnitedHealthcare of California
UnitedHealthcare
Revenue: N/A
Business: Health insurer
City: Cypress



CHRISTOPHER DE ROSA
Regional Vice President, West Region
Cigna HealthCare of California
Business: Health insurer
Revenue: N/A
City: Glendale

HOWARD A. KAHN

Chief Executive
L.A. Care Health Plan
Business: Health insurer
Revenue: \$2.69 billion
City: Los Angeles
Civic Organizations: Charles Drew University School of Medicine; Insure the Uninsured Project; Latino Coalition for a Healthy California; Association for Community Affiliated Plans

MIKE MALORY

Sales Director
Blue Shield of California
Revenue: \$10.8 billion
Business: Health insurer
City: El Segundo

RICHARD MERKIN

Chief Executive, President
Heritage Provider Network
Business: Health insurer
Revenue: N/A
City: Northridge
Civic Organizations: California Institute of Technology; Keck School of Medicine at the University of Southern California; California NanoSystems; Institute at UCLA; EdVoice; United

Friends of the Children; Board of Overseers of the Los Angeles Music Center and the Los Angeles Philharmonic; Board of Trustees for the Los Angeles County Museum of Art
Professional Organizations: California Association of Physician Groups

J. MARIO MOLINA

President, Chief Executive
Molina Healthcare Inc.
Business: Health insurer
Revenue: \$6.59 billion
City: Long Beach

MARK MORGAN

President
Anthem Blue Cross
Revenue: N/A
Business: Health insurer
City: Woodland Hills

STEVEN SELL

President, Western Region
Health Net of California
Revenue: \$12 billion
Business: Health insurer
City: Woodland Hills

ANNA TRAN

Chief Executive
Care 1st Health Plan
Business: Health insurer
Revenue: N/A
City: Monterey Park

► HOSPITALS

DAN CASTILLO

Chief Executive
L.A. County-USC Medical Center
Business: hospital
Net patient revenue: \$850 million
City: Los Angeles

RICHARD D. CORDOVA

President, Chief Executive
Children's Hospital Los Angeles
Business: Hospital and scientific research center
Revenue: \$866 million
City: Los Angeles
Professional Organizations: American College of Healthcare Executives; California Children's Hospital Association; California Hospital Association

SCOTT EVANS

Chief Executive
Keck Hospital of USC
Business: Health care
Net Patient Revenue: \$618 million
City: Los Angeles
Professional: Hospital Association of Southern California

DAVID T. FEINBERG

Chief Executive, President
Ronald Reagan UCLA Medical Center
Business: Hospital, neurosciences, pediatrics, transplant
Net Patient Revenue: \$1.42 billion
City: Los Angeles
Professional Organizations: Council of Teaching Hospitals
Civic Organizations: Rand Health Board of Advisors; Sound Body Sound Mind Board of Advisors



DELVECCHIO FINLEY
Chief Executive
L.A. County-Harbor
UCLA Medical Center
Business: Hospital
Net Patient Revenue: \$613 million
City: Torrance

Professional Organizations: Hospital Association of Southern California;
Civic Organizations: California Health Professions Education Foundation; Public Health Foundation Enterprises Inc.

DIANA HENDEL

Chief Executive
Long Beach Memorial Medical Center
Business: Hospital, emergency, pediatrics
Net Patient Revenue: \$543 million
City: Long Beach

BERNARD KLEIN

Chief Executive
Providence Holy Cross Medical Center
Business: Hospital
Net Patient Revenue: \$442 million
City: Mission Hills

CRAIG LEACH

Chief Executive, President
Torrance Memorial Medical Center
Business: Hospital
Net Patient Revenue: \$463 million
City: Torrance

THOMAS M. PRISELAC

Chief Executive, President
Cedars-Sinai Medical Center
Business: Hospital, cardiac, neonatal intensive care, spine surgery
Net Patient Revenue: \$2.56 billion
City: Los Angeles
Professional Organizations: Joint Commission Center for Transforming Healthcare

STEPHEN RALPH

Chief Executive, President
Huntington Memorial Hospital
Business: Hospital
Net Patient Revenue: \$505 million
City: Pasadena

ROBERT STONE

Chief Executive, President
City of Hope
Business: Hospital, biomedical research, treatment and education
Net Patient Revenue: \$778 million
City: Duarte

JAMES WEST

Chief Executive, President
Presbyterian Intercommunity Hospital
Business: Hospital
Net Patient Revenue: \$475 million
City: Whittier

RICHARD E. YOCHUM

Chief Executive, President
Pomona Valley Hospital Medical Center
Business: Hospital
Net Patient Revenue: \$457 million
City: Pomona
Professional Organizations: Hospital Association of Southern California; California Hospital Association
Civic Organizations: L.A. County Fair Association; President's Council, California State Polytechnic University; President's Society,

University of La Verne; President's Society, Mt. San Antonio College

HOSPITALITY

► HOTELS

PHIL BAXTER

General Manager
Westin Los Angeles Airport
Amenities: Kosher kitchen, 24-hour room service, covered parking garage for 1,100 vehicles, airport shuttle, concierge
Rooms: 740
City: Los Angeles

JAVIER CANO

General Manager
Ritz-Carlton/JW Marriott at L.A. Live/Courtyard/Residence Inn
Amenities: Concierge, fitness center, 24-hour business center, pool, restaurant, spa
Rooms: 1,394
City: Los Angeles

WANDA CHAN

General Manager
Millennium Biltmore Hotel
Amenities: Health club, 24-hour business center, concierge, pool, restaurant
Rooms: 683
City: Los Angeles

GRANT COONLEY

General Manager
Hilton Los Angeles Airport
Amenities: Covered parking, 24-hour business center, airport shuttle, concierge, fitness center
Rooms: 1,234
City: Los Angeles



MICHAEL CZARCINSKI
General Manager
Westin Bonaventure Hotel & Suites
Amenities: Concierge, fitness center, pool, restaurant
Rooms: 1,354
City: Los Angeles

Professional Organizations: Chairman Hotel Association of Los Angeles, Executive Committee Los Angeles Tourism and Convention Board
Civic Organizations: Executive Committee Central City Association

TERRI A. HAACK

President
Terranea Resort
Amenities: Concierge, fitness center, pool, high-speed Internet, pool
Rooms: 582
City: Rancho Palos Verdes
Professional Organizations: American & Hotel Lodging Association, Women in Lodging Executive Council, National Resort Committee, California Hotel & Lodging Association, American Hotel & Lodging Educational Foundation Scholarship Committee, Palos Verdes Peninsula Chamber of Commerce, Strategic Planning Board for Marymount California University

STEVEN HALL

General Manager
Los Angeles Airport Marriott
Amenities: Airport shuttle, concierge,



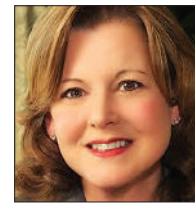
HEALTH INSURERS

BENJAMIN K. CHU
Group President
Kaiser Foundation
Health Plan Inc.



HOSPITALS

DAVID T. FEINBERG
Chief Executive, President
Ronald Reagan UCLA
Medical Center



HOTELS

TERRI A. HAACK
President
Terranea Resort

high-speed Internet, pool, restaurant
Rooms: 1,004
City: Los Angeles

CHARLIE HINES

Managing Director
Loews Hollywood Hotel
Amenities: Concierge, 24-hour business center, fitness center, pools, restaurant, spa
Rooms: 628
City: Hollywood

S. CHRIS PARK

General Manager
Wilshire Grand Los Angeles
Amenities: Concierge, fitness center, high-speed Internet, pool, spa
Rooms: 900
City: Los Angeles

SUSAN SANTIAGO

General Manager
Hyatt Regency Century Plaza
Amenities: Equinox Fitness Club + Spa, Starbucks, Regency Club, 24-hour business center, fitness center
Rooms: 728
City: Los Angeles

MICHAEL WASHINGTON

General Manager
Sheraton Gateway Los Angeles Airport
Amenities: Airport shuttle, 24-hour business center, concierge, fitness center, pool, restaurant
Rooms: 802
City: Los Angeles

▶ **TRAVEL AGENCIES**

TOBY BRENNER

Chief Executive, President
Par Avion Travel Inc.
Business: Travel agency, entertainment, cruises and tours, corporate, individual, leisure, golf
L.A. County Sales: \$18.9 million
City: Los Angeles

ALEXANDRE CHEMLA

President and Founder
Altour
Business: Travel Management
L.A. County Sales: \$440 million
City: Los Angeles
Age: 66
Professional Organizations: French American Chamber of Commerce, French Institute Alliance Francaise
Civic Organizations: French Foreign Trade Advisors and French-American Aid for Children

TAMA TAYLOR HOLVE

Chief Executive, Owner
Willett Travel

Business: Travel agency, corporate, entertainment, cruises and tours, group meetings, inbound and out-bound groups
L.A. County Sales: \$19.3 million
City: Studio City

ANASTASIA K. MANN

Chairwoman, Chief Executive
Corniche Group Inc.
Business: Travel agency, corporate, cruises and tours, entertainment, group meetings, individual
L.A. County Sales: \$27.3 million
City: West Hollywood

VIRGINIA K. MANSOUR

Chief Executive, President
Mansour Travel Co.
Business: Travel agency, cruises and tours, corporate, individual, group meetings, luxury trips
L.A. County Sales: \$21 million
City: Beverly Hills

JOE McCLURE

President
Montrose Travel
Business: Travel Management, Corporate Travel, Vacation Travel, Group, Meeting & Incentive Travel, Loyalty Travel, Host Agency
L.A. County Sales: \$270 million
City: Montrose, CA
Age: 50

MICHELE L. MONTGOMERY

Chief Executive Officer, President
Cassis Travel Services Inc.
Business: Travel agency, corporate, cruises and tours, entertainment, group meetings, individual
L.A. County sales: \$65 million
City: Los Angeles
Age: 64
Professional Organizations: Ritz Carlton Advisory Board, Four Seasons Preferred Partnership Program, Intercontinental Hotel Advisory Board, Commonwealth Travel Business Group, Dorchester Diamond Club
Membership in Civic Organizations: AMCC-CEC, Southern California Alzheimer's Association

JERRY SAXE

Vice President, Sales
Carlisle Travel Management
Business: Travel agency, group meetings, individual, leisure, incentives and marketing
L.A. County Sales: \$18 million
City: Los Angeles

WIDO L. SCHAEFER

Chairman, Chief Executive
TravelStore Inc.
Business: Travel agency, corporate,

cruises and tours, entertainment, individual, student/youth
L.A. County sales: \$325.7 million
City: Los Angeles

MICKEY WEILL

Vice President of Sales Development
Protravel International/ProWest LLC
Business: Travel agency
L.A. County Sales: \$328 million
City: Los Angeles
Age: 61
Professional Organizations: Hotel advisory boards for Fairmont, Rosewood, Morgans, Sofitel, Destination Hotels and Resorts Civic Organizations: Stop Cancer

INTERNET

MICHAEL S. EGAN

Chief Executive
Spark Networks Inc.
Business: Provider of online personal services
Revenue: \$69.4 million
City: Los Angeles



JOHN GIULIANI
President and Chief Executive
Conversant Inc.
Age: 52
Business: Online marketing services
Revenue: \$540 million
City: Westlake Village
Organizations: University of Illinois Foundation; Chicago Athletics Advisory Board

MARK R. GOLDSTON

Chairman, President, Chief Executive
United Online Inc.
Age: 59
Business: Internet consumer products and services
Revenue: \$233.6 million
City: Woodland Hills
Professional Organizations: World Presidents' Organization
Civic Organizations: Cedars-Sinai Hospital; Marshall School, University of Southern California; Kellogg School of Management, Northwestern University; Fisher School of Business; Ohio State University

ZORIK GORDON

Chief Executive, Director
ReachLocal Inc.
Age: 42
Business: Internet, online marketing and reporting
Revenue: \$514 million
City: Woodland Hills



DAVID HAGAN
Chief Executive
Boingo Wireless Inc.
Age: 53
Business: Wireless services
Revenue: \$107 million
City: Los Angeles
Professional Organizations: Young Presidents' Organization; CEA Wireless Division; CEA Board of Industry Leaders
Civic: Heal the Bay; SOVA Food Bank; Global Green USA



KEN McBRIDE
Chairman, Chief Executive
Stamps.com, Inc.
Age: 46
Business: Internet
Revenue: \$127 million
City: El Segundo
Professional Organizations: Young Presidents' Organization
Civic Organizations: California Science Center

SANJAY SABNANI

Chairman, President, Chief Executive
CrowdGather Inc.
Age: 43
Business: Internet, developing forum-based Web sites
Revenue: \$1.5 million
City: Woodland Hills

MEDIA

▶ **ADVERTISING AGENCIES**



DAVID ANGELO
Founder, Chief Creative Officer
David&Goliath
Age: 53
Clients: Kia Motors America, MGM Resorts
Gross Billings: WND
City: El Segundo
Professional: Los Angeles Ad Association; Art Directors Club

JOHN BOILER

Chief Executive
72andSunny Partners
Clients: Carl's, Jr./Hardee's, Activision, Google
Gross Billings: \$669 million
City: Los Angeles

GERALD BAGG/RENEE YOUNG

Chief Executive/Chief Operator
Quigley-Simpson
Clients: Procter & Gamble, JP Morgan Chase

Gross Billings: \$493 million
City: Los Angeles
Professional Organizations: Board member, Electronic Retailing Association



BILL HAGELSTEIN
Chief Executive, President
Rubin Postaer and Associates
Clients: Honda, Farmers Insurance
Gross Billings: WND
City: Santa Monica
Professional Organizations: Ad Council, American Advertising Federation
Civic Organizations: Executive vice president, Los Angeles Music Center Fraternity of Friends

JULIA Y. HUANG

President
InterTrend Communications Inc.
Clients: Toyota Motor Sales, State Farm Insurance, AT&T
Gross Billings: \$33 million
City: Long Beach

ROBERTO ORCI

Chief Executive, President
Acento Advertising
Clients: Wells Fargo, CenturyLink, Northgate Markets
Gross Billings: WND
City: Santa Monica



JOE PHELPS
Chief Executive
Phelps Group
Clients: American Licorice, City of Hope, LAX
Gross Billings: \$84 million
City: Santa Monica



JOSE VILLA
Chief Executive, President
Sensis
Age: 38
Clients: Southern California Gas Co., Ameritas College
Gross Billings: \$11 million
City: Los Angeles
Civic: Hispanicize Conference; National Society of Hispanic MBAs; Cesar Chavez Foundation; Robert Toigo Foundation



BEN WIENER
Chief Executive
Wongdoody
Age: 41
Clients: Alaska Airlines, Cedars-Sinai
Gross Billings: \$200 million



Who's Who in Los Angeles Business *continued*

City: Culver City
Professional: 4A's; Mirren Business Development; Digital Hollywood
Civic: Jewish Venture Philanthropy Fund; Regional Leadership Council, University of Chicago; Writer's Arc

ROBERT B. YALLEN
Chief Executive, President
Inter/Media Group of Cos.
Clients: Budget Blinds, Caring.com
Gross Billings: \$592 million
City: Woodland Hills

► PUBLIC RELATIONS AGENCIES



HAL DASH
Chairman, Chief Executive
Cerrell Associates Inc.
Age: 65

Business: Public affairs, communications, advocacy
Fee Income: \$4 million
City: Los Angeles
Clients: American Beverage Assn., Bombardier Transportation, Hanjin International Corp., Microsoft Corp.

JOHN DAVIES
Chief Executive, Chairman
Davies
Fee Income: \$12.7 million
City: Santa Monica

JOHN ESCHVESTE/PATRICIA PÉREZ
Partners
VPE Public Relations
Clients: Southern California Edison, Disneyland, California Wellness Foundation
Fee Income: \$1.4 million
City: South Pasadena

RICHARD EDELMAN
Chief Executive, President
Edelman
Clients: Microsoft, Sunkist, Activision, Nestle, Mattel
Fee Income: \$734 million
City: Los Angeles

HARVEY A. ENGLANDER
Managing Partner
Englander Knabe & Allen
Clients: Motorola, Westfield, AT&T
Fee Income: \$8.7 million
City: Los Angeles

STEPHEN GRONER
President
S. Groner Associates Inc.
Clients: U.S. Environmental Protection Agency, Waste Management Inc.
Fee Income: \$2.6 million
City: Long Beach

JOSEPH MOLINA
President
JMPR Public Relations Inc.
Clients: Infiniti, Bentley Motors, Airstream
Fee Income: \$2.4 million
City: Woodland Hills

KAREN MURPHY O'BRIEN
Chairman, Chief Executive
Murphy O'Brien Inc.
Age: 55
Clients: Catalina Island, Chrysalis, Shutters on the Beach
Fee Income: \$8.8 million
City: Los Angeles

TRACY OLMSTEAD WILLIAMS
Chief Executive, President
Olmstead Williams Communications
Clients: Ernst & Young, Brentwood Associates, Bruin Biometrics
Fee Income: \$1.4 million
City: Los Angeles



**MARK POGACHEVSKY/
 RACHEL McCALLISTER**
President/Chairman
MPRM Public Relations
Clients: YouTube,

Focus Features
Fee Income: \$3.4 million
City: Los Angeles
Professional Organizations: PROI, Academy of Motion Picture Arts and Sciences, Outfest Film Festival board

MAX MARTENS
Vice President
PadillaCRT
Clients: Hass Avocado Board, Bridgestone Americas
Fee Income: \$32.4 million
City: Los Angeles

RON ROGERS
Managing Partner
Rogers Finn Partners
Clients: Logitech, Hyundai Hope on Wheels, BevMo
Fee Income: \$44.4 million
City: Los Angeles

► STUDIOS/PRODUCTION COMPANIES

JOHN FELTHEIMER
Chief Executive
Lions Gate Entertainment Corp.
Business: Entertainment
City: Santa Monica

BRAD GREY
Chief Executive
Paramount
Business: Entertainment
City: Los Angeles

JIM GIANOPOLUS
Chief Executive
20th Century Fox Film
Business: Entertainment
City: Los Angeles

ROBERT IGER
Chief Executive
Walt Disney Co.
Business: Entertainment
City: Burbank

JEFFREY KATZENBERG
Chief Executive
DreamWorks Animation SKG Inc.
Business: Entertainment
City: Glendale

RYAN KAVANAUGH
Chief Executive
Relativity Media
Business: Entertainment
City: Beverly Hills

DONNA LANGLEY
Chairman
Universal Pictures
Business: Entertainment
City: Universal City

PAUL LEE
President

ABC Entertainment Group
Business: Entertainment
City: Burbank

MICHAEL LYNTON
Chief Executive
Sony Pictures
Business: Entertainment
City: Culver City

ARMANDO NUNEZ
President, Distribution
CBS Corp.
Business: Entertainment
City: Los Angeles

JENNIFER SALKE
President
NBC Entertainment
Business: Entertainment
City: Burbank

KEVIN TSUJIHARA
Chief Executive
Warner Bros
Business: Entertainment
City: Burbank

► TALENT AGENCIES

HARRY ABRAMS
Chairman, Chief Executive
Abrams Artists Agency
Business: Talent agency
Agents: 34
City: Los Angeles

ARI EMANUEL
Co-Chief Executive
WME
Business: Talent agency
Agents: 201
City: Beverly Hills

BOB GERSH/DAVID GERSH
Co-Presidents
Gersh Agency
Business: Talent agency
Agents: 81
City: Beverly Hills

JAMES H GOSNELL JR
Chief Executive, President
APA
Business: Talent agency
Agents: 154
City: Beverly Hills

SAM GORES
Chief Executive, Chairman
Paradigm
Business: Talent agency
Agents: 70
City: Beverly Hills

CYNTHIA KAZARIAN
President
Kazarian/Measures/Ruskin & Associates
Business: Talent agency
Agents: 19
City: Studio City

RICHARD LOVETT
President
Creative Artists Agency
Business: Talent agency
Agents: 365
City: Los Angeles

ANDY SOMERS
Senior Vice President
Agency Group Ltd.

Business: Talent agency
Agents: 17
City: Los Angeles

PATRICK WHITESELL
Co-Chief Executive
WME
Business: Talent agency
Agents: 201
City: Beverly Hills

JEREMY ZIMMER
Chief Executive
United Talent Agency
Business: Talent Agency
Agents: 135
City: Beverly Hills

REAL ESTATE

► ARCHITECTURE

DANIEL AVCHEN
Chief Executive
HGA Architects
Business: Architecture, planning
L.A. County Billings: \$23 million
City: Santa Monica



JOSEPH A. BALBONA
Chief Executive
RBB Architects Inc.
Business: Architecture, master planning, interior design

Revenue: \$16.7 million
City: Los Angeles
Professional Organizations: American Institute of Architects, American College of Healthcare Architects
Civic Organizations: Mission Hospital Foundation, Antelope Valley Hospital Foundation, Hoag Hospital Foundation, Northridge Hospital Medical Center Foundation

NATE CHERY
Vice President
RTL Associates Inc.
Business: Architecture and design
L.A. County Billings: \$31.9 million
City: Los Angeles

ANDY COHEN/ROBERT JERNIGAN
Co-CEO/Regional Principal
Gensler
Business: Architecture, interior design, planning and urban design
L.A. County Billings: \$76 million
City: Los Angeles

ROBERT CULL
Managing Principal
HOK
Business: Architecture, strategic consulting
L.A. County Billings: \$25.5 million
City: Culver City

MICHAEL A. ENOMOTO
Managing Partner
Gruen Associates
Business: Architecture, landscape architecture, planning, interior design
L.A. County Billings: \$11.5 million
City: Los Angeles

WILLIAM H. FAIN JR./SCOTT JOHNSON
Co-Presidents, Design Partners
Johnson Fain
Business: Architecture, urban design and planning, design-build

L.A. County Billings: \$13.2 million
City: Los Angeles

STAN HATHAWAY
Partner
5+design
Business: Architecture, planning, interiors
L.A. County Billings: \$17.8 million
City: Los Angeles

SCOTT HUNTER
Principal, Managing Director
HKS Architects Inc.
Business: Architecture, planning, urban design
L.A. County Billings: \$19.7 million
City: Los Angeles

TED HYMAN
Partner
ZGF Architects
Business: Architecture, planning, urban design
L.A. County Billings: \$35 million
City: Los Angeles

SCOTT KELSEY
Managing Principal
CO Architects
Business: Architecture, planning, programming
L.A. County Billings: \$30 million
City: Los Angeles

ROBERT MANKIN
Partner
NBBJ
Business: Architecture and design
L.A. County Billings: \$13.4 million
City: Los Angeles
Professional Organizations: American Institute of Architects, United States Green Building Council

PAUL MARTINKOVIC/JOHN SIMONES
Co-Chief Executives
Jerde Partnership
Business: Architecture and design
L.A. County Billings: \$17.5 million
City: Los Angeles

STEVE RUTH
Chief Executive, President
Perkowitz+Ruth Architects
Business: Architecture and design
L.A. County Billings: \$27.6 million
City: Long Beach

MICHAEL J. SMITH
Principal, Western Region
CannonDesign
Business: Architecture, engineering, master planning
L.A. County Billings: \$26.6 million
City: Los Angeles

ERIC VAN AUKEE
Principal, Managing Director
Perkins+Will
Business: Architecture, interior design, planning
L.A. County Billings: \$21.2 million
City: Los Angeles

AMY WILLIAMS
Managing Principal
HDR Architecture Inc.
Business: Architecture, engineering, interiors
L.A. County Billings: \$13.5 million
City: Pasadena



COMMERCIAL REAL ESTATE BROKERAGE FIRMS

LEWIS C. HORNE
Executive Managing Director
CBRE Group



COMMERCIAL REAL ESTATE DEVELOPERS

EDWARD P. ROSKI JR.
Chairman, President
Majestic Realty



RESTAURANTS/RETAIL

DAVID OVERTON
Chairman, Chief Executive
Cheesecake Factory Inc.

► **COMMERCIAL REAL ESTATE BROKERAGE FIRMS**

ALAN AUFHAMMER
Managing Director
Jones Lang LaSalle
Services: Industrial, lease administration, office, investment property acquisition/disposition
L.A. Deals Value: \$1.6 billion
City: Los Angeles

LEONARD B. BAILES
President and Founder
Bailes & Associates
Services: Industrial, lease administration, tenant rep, retail, consulting
L.A. Deals Value: \$776 million
City: Los Angeles

 **HUNT BARNETT**
Principal
LA Realty Partners
Services: Commercial real estate brokerage
L.A. Deals Value: \$1 billion
City: Century City

BARRY BEITLER
President
Beitler Commercial Realty Services
Services: Corporate services, industrial, lease administration, apartment, hospitality
L.A. Deals Value: \$1.4 billion
City: Los Angeles

LEWIS C. HORNE
Executive Managing Director
CBRE Group
Services: Corporate services, industrial, apartment, hospitality
L.A. Deals Value: \$10.9 billion
City: Los Angeles

CHUCK HUNT
Managing Director, Southern California
Newmark Grubb Knight Frank
Services: Corporate services, industrial, office, apartment, appraisal, mixed-use
L.A. Deals Value: \$3.8 billion
City: Los Angeles

STEVEN D. KOLSKY
Managing Director
Newmark Grubb Knight Frank
Services: Corporate services, industrial, office, apartment, appraisal, mixed-use
L.A. Deals Value: \$3.8 billion
City: Los Angeles

MICHAEL NUBEL
Chief Executive, President
Daum Commercial Real Estate Services
Services: Corporate services, industrial, lease administration, apartment
L.A. Deals Value: \$1.7 billion
City: Los Angeles

GERALD A. PORTER
Founding Principal
Cresa
Services: Industrial, lease administration, office, capital markets advisory
L.A. Deals Value: \$2.2 billion
City: Los Angeles

MARTIN PUPIL
President, Western Region
Colliers International
Services: Industrial, lease administration, apartment, hospitality, office, retail
L.A. Deals Value: \$2.2 billion
City: Los Angeles

DAVID RICH
Senior Vice President, Managing Director
Sperry Van Ness
Services: Industrial, lease administration, residential income, retail
L.A. Deals Value: \$900 million
City: Los Angeles

 **MARK T. SULLIVAN**
Executive Vice President, Director, Regional Manager
Studley Inc.
Services: Commercial real estate brokerage and consulting
L.A. Deals Value: \$4.65 billion
City: Los Angeles
Professional Organizations: CoreNet Global, Lactra
Civic Organizations: Los Angeles Economic Development Corp.

JAMES N. TRAVERS
Chairman
Travers Realty Corp.
Services: Corporate services, industrial, lease administration, land, office
L.A. Deals Value: \$612 million
City: Los Angeles

ANDREW McDONALD
Executive Director, Market Leader
Cushman & Wakefield of California Inc.
Services: Corporate services, industrial, lease administration, investment property acquisition/disposition
L.A. Deals Value: \$6.1 billion
City: Los Angeles

► **COMMERCIAL REAL ESTATE DEVELOPERS**

DAN BECKERMAN
Chief Executive, President
AEG
Business: Sports, entertainment, property
L.A. County Projects Developed: 6.3 million sq. ft.
City: Los Angeles

BRUCE A. CHOATE
Chief Executive, President
Watson Land Co.
Business: Real estate development
L.A. County Projects Developed: 19.3 million sq. ft.
City: Carson

EDWARD P. ROSKI JR.
Chairman, President
Majestic Realty
Business: Real estate development
L.A. County Projects Developed: 48.1 million sq. ft.
City: City of Industry

 **SANDY SIGAL**
Chief Executive, President
NewMark Merrill Cos.
Business: Shopping center development, acquisition, management and leasing
L.A. County Projects Developed: 7.1 million sq. ft.
City: Woodland Hills
Professional: International Council of Shopping Centers, Young President's Organization
Civic: Camp Max Straus Foundation, Jewish Big Brothers Big Sisters

JEROME SNYDER/MICHAEL WISE/LEWIS GEYSER
Senior Partners
J.H. Snyder Co.
Business: Real estate development
L.A. County projects developed: 7.8 million sq. ft.
City: Los Angeles

TIMUR TECIMER/STANLEY MOORE
Chief Executive/Founder
Overton Moore Properties
Business: Real estate development
L.A. County Projects Developed: 28.6 million sq. ft.
City: Gardena

NADINE WATT
President
Watt Cos.
Business: Real estate development

L.A. County Projects Developed: 10 million sq. ft.
City: Santa Monica

RESTAURANTS/RETAIL

JOHN DAWSON
Chief Executive, President
International Coffee & Tea
Business: Restaurant franchiser (Coffee Bean & Tea Leaf)
Revenue:
Locations: 950
City: Los Angeles

ALAN JACKSON
Chief Executive
Lemonade Restaurant Group
Business: Restaurant chain
Revenue: \$28.4 million
Locations: 14
City: Los Angeles

AMIT Y. KLEINBERGER
Chief Executive
Menchie's Frozen Yogurt
Business: Restaurant franchiser
Revenue: \$189 million
Locations: 333
City: Encino

STEVEN G. MILLER
Chairman, Chief Executive, President
Big 5 Sporting Goods Corp.
Age: 62
Business: Retail, sporting goods
Revenue: \$993 million
City: El Segundo

DAVID OVERTON
Chairman, Chief Executive
Cheesecake Factory Inc.
Age: 68
Business: Restaurant
Revenue: \$1.88 billion
City: Calabasas
Professional Organizations: National Restaurant Association

JULIA STEWART
Chairwoman, Chief Executive
DineEquity Inc.
Age: 58
Business: Restaurant franchiser (Applebee's, IHOP)
Revenue: \$641 million
Locations: 3,653
City: Glendale

SOFTWARE

ROBERT A. KOTICK
Chief Executive, President
Activision Blizzard Inc.
Age: 51

Business: Video games
Revenue: \$4.33 billion
City: Santa Monica
Civic: Center for Early Education; Los Angeles County Museum of Art; Call of Duty Endowment

SHAWN MCCREIGHT
Chairman, Chief Technology Officer
Guidance Software Inc.
Business: Digital investigative software
Revenue: \$110 million
City: Pasadena

ADAM L. MILLER
Chairman, Chief Executive, President
Cornerstone OnDemand Inc.
Age: 44
Business: Talent management software
Revenue: \$185 million
City: Los Angeles
Civic: Cornerstone OnDemand Foundation; Food Allergy Research and Education; IKAR; Team Rubicon

WALTER S. WOLTOSZ
Chairman, Chief Executive
Simulations Plus Inc.
Age: 68
Business: Pharmaceutical research and education software
Revenue: \$11.5 million
City: Lancaster

HOW WE DID IT

To compile this list of L.A.'s chief executives, the Business Journal queried the largest local companies in their industries, using the newspaper's year-end book of lists and the L.A.BJ Stock Index as guides. For those companies that did not respond to our inquiries, we used the latest available information from the book of lists and Internet research. The information was researched and compiled by Howard Fine, Subrina Hudson, Carol Lawrence, Sandro Monetti, Cale Ottens, Matt Pressberg, Omar Shamout, Marni Usheroff, Melissa Yang, Cassie Paton and Jacquelyn Ryan.